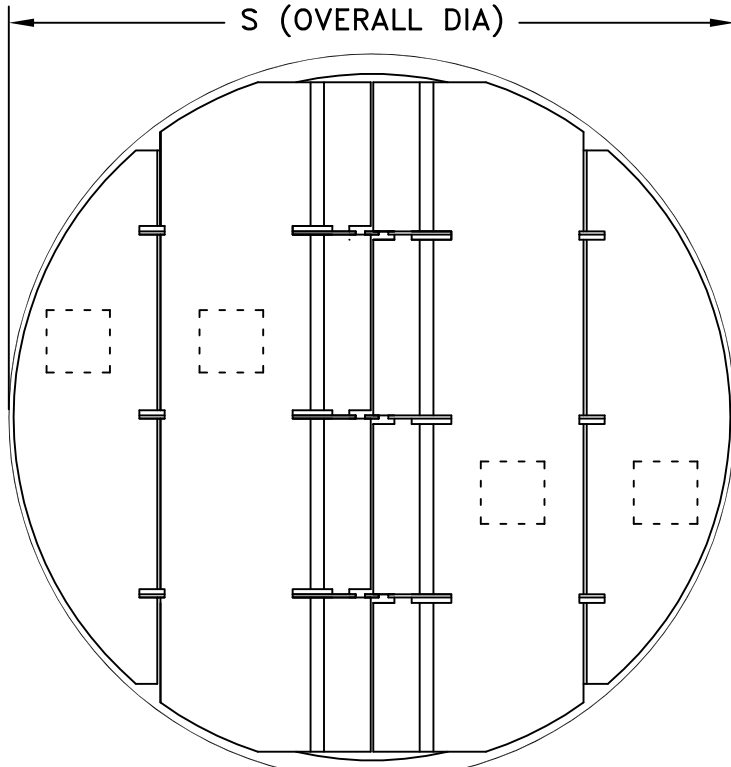
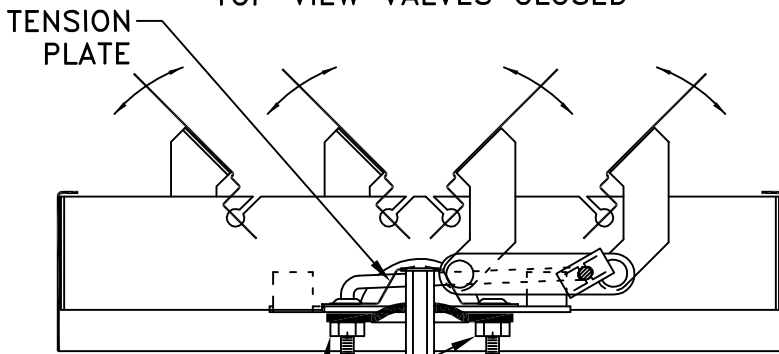


- STEEL CONSTRUCTION .035 THICK
- SCREW OR RIVET TO DUCT
- OPPOSED BLADE OPERATION
- AVAILABLE IN 6 – 18 INCH DIAMETERS
- FINISH: WHITE (W) ENAMEL



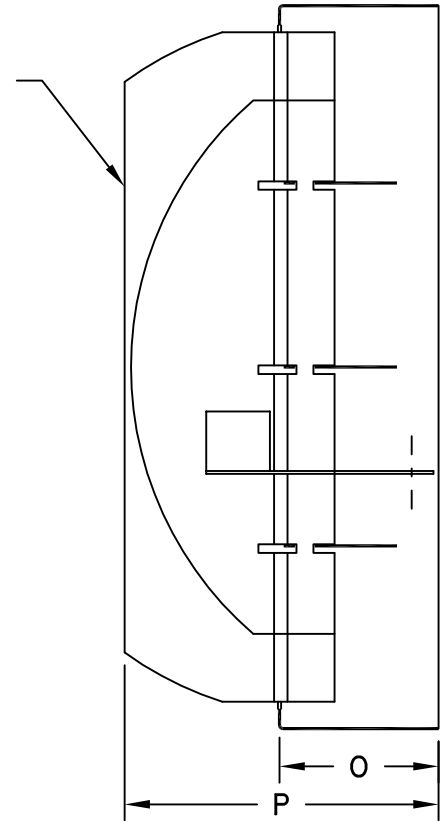
TOP VIEW VALVES CLOSED



LOCK NUTS:
 LOOSEN BEFORE
 ADJUSTING DAMPER.
 TIGHTEN AFTER ADJUSTING
 DAMPER TO PROVIDE POSITIVE LOCK.

CROSS SECTION WITH VALVES PARTLY OPEN
 SHOWING OPPOSED BLADE OPERATION

OPPOSED
 BLADE
 DAMPER
 VALVES
 FULLY
 OPEN



IF OPERATOR IS TO BE REMOVED AFTER
 SETTING DAMPER, DO NOT DRIVE INTO
 TENSION PLATE AS THIS LOCKS ROD IN
 PLACE FOR PERMANENT INSTALLATION

SIZE	S	O	P
6	5-15/16	1-3/4	3
8	7-15/16	1-3/4	3-1/2
10	9-15/16	1-3/4	4-9/16
12	11-15/16	1-3/4	4-9/16
14	13-15/16	1-3/4	4-9/16
15	14-15/16	1-3/4	4-9/16
16	15-15/16	1-3/4	4-9/16
18	17-15/16	1-3/4	4-9/16

JOB NAME: _____
 LOCATION: _____
 ARCHITECT: _____
 ENGINEER: _____
 CONTRACTOR: _____

SUBMITTED BY: _____

DATE: 4/26/11

805-D
 Opposed-Blade Damper
 For Model 805
 Round Ceiling Diffuser